

Coronavirus disease (COVID-19)

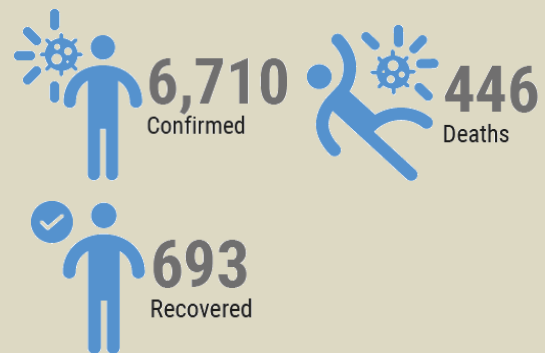
Situation Report 22 Philippines 22 April 2020

Data reported by the Department of Health on 22 April 2020

Highlights

- **Out of the total 6,710 confirmed cases reported in the Philippines until today, 53% are male, with the most affected age group 30-39 years (18.9%) followed by 50-59 (17.6%)**
- 71.3% of cases reported from National Capital Region (NCR), followed by CALABARZON (14.9%) and Central Luzon (5.3%)
- **Out of the 446 confirmed deaths, 67.5% are male, with the most affected age group over 70 years (34.1%) followed by 60-69 years (33.4%)**
- 65.7% of deaths reported from NCR, followed by CALABARZON (15.2%) and Central Luzon (6.1%)
- **Daily testing capacity temporarily scaled down due to cluster of confirmed cases in the Research Institute for Tropical Medicine (RITM). Additional assessments of private and public hospital laboratories continues, to expand the current network of 17 laboratories able to conduct COVID-19 tests.**
- The Asian Development Bank (ADB) delivered COVID-19 laboratory equipment to enhance daily testing capacity.
- **Currently 57.1% of hospitals and 63.3% of infirmaries reporting availability of essential resources on a daily basis through the Department of Health (DOH) DataCollect application**
- Increasing number of Local Government Units (LGUs) establishing community quarantine and treatment centres.
- **Almost 2,000 hospital workers and community health workers trained on Infection Prevention and Control (IPC) through online trainings throughout the country**

PHILIPPINES SITUATION IN NUMBERS



24/7 DOH Hotlines

FOR COVID-19 HEALTH CONCERNS:

DOH COVID-19 Hotline

**(02) 894-COVID (26843)
1555**

NCR DEDICATED TELEMEDICINE HOTLINES:

Telimed Management Inc., and Medgate Hotline

(02) 8424-1724

Global TeleHealth, Inc. (KonsultaMD)

(02) 7798-8000

FOR MENTAL HEALTH CONCERNS:

NCMH Crisis Hotline

**0917-899-USAP (8727)
(02) 899-USAP (8727)**

[f OfficialDOHgov](#) [@DOHgovph](#) [doh.gov.ph](#) [\(02\) 894-COVID](#)

<https://covid19.healthphilippines.ph/>

<https://www.doh.gov.ph/covid19tracker>

<http://www.covid19.gov.ph/>

ADVISORY

RITM has two hotline numbers exclusively dedicated for follow-up of laboratory confirmation results:

**0919 927 9180
0919 927 9204**

All RESU concerns should be directed to hotline numbers:

**0947 870 6673
0915 375 9204**

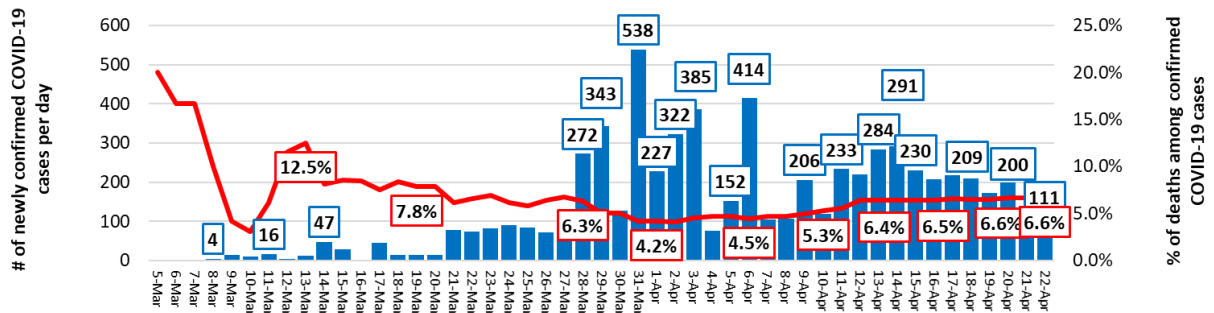


DEPARTMENT OF HEALTH - RESEARCH INSTITUTE FOR TROPICAL MEDICINE
9002, RESEARCH DRIVE, FILINVEST CORPORATE CITY,
ALABANG, MUNTINLUPA CITY

Current Situation

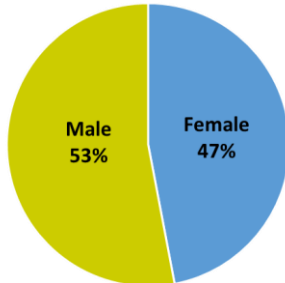
As of 22 April, a total of 6,710 confirmed COVID-19 cases including 446 deaths have been reported in the Philippines. Out of total 446 confirmed deaths, 67.5% are male, with most affected age group over 70 (34.1%) followed by 60-69 years of age (33.4%).

Daily reported confirmed COVID-19 cases in the Philippines
5- 22 April 2020 (N=6,710)

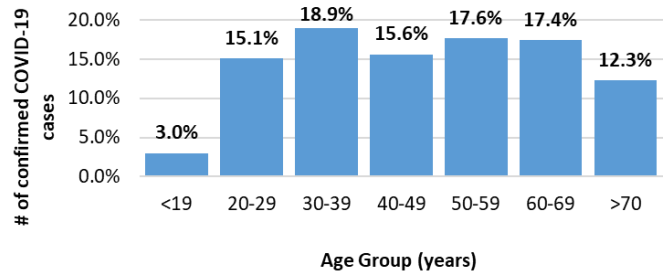


Among the 6,710 confirmed cases, 3,556 are male (53%) and 3,154 are female (47%). The most affected age groups are 30-39 years (18.9%) followed by 50-59 years (17.6%).

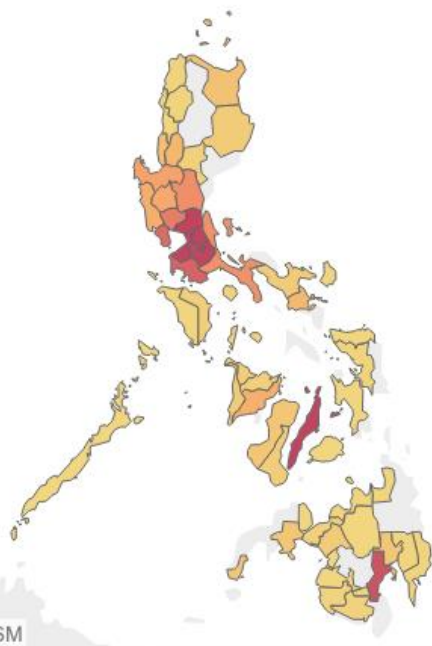
Gender distribution of confirmed COVID-19 cases in the Philippines in %
18 January-22 April 2020 (N=6,710)



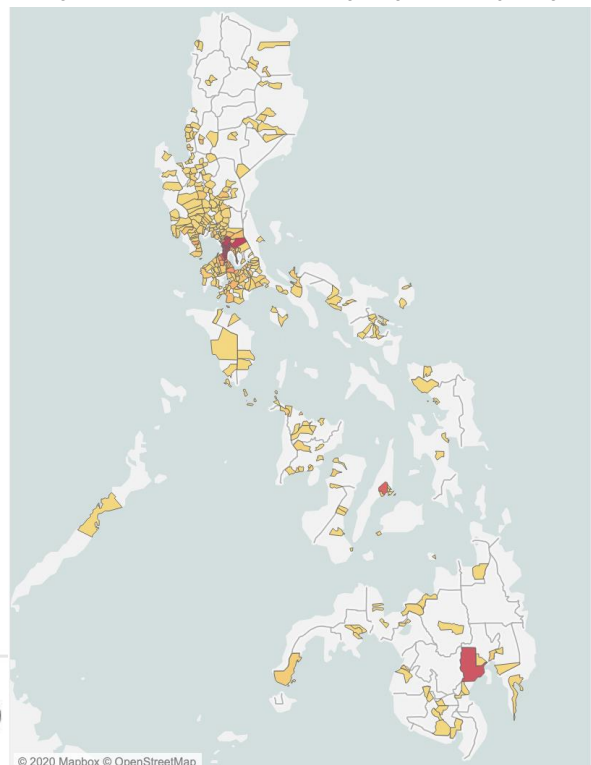
Age distribution of confirmed COVID-19 cases in the Philippines in %
18 January-22 April 2020 (N=6,710)



Confirmed COVID-19 cases by province



Confirmed COVID-19 cases by city/municipality



Maps courtesy of Mark Marcelino in partnership with DOH-Epidemiology Bureau (EB)

Country readiness and response operations

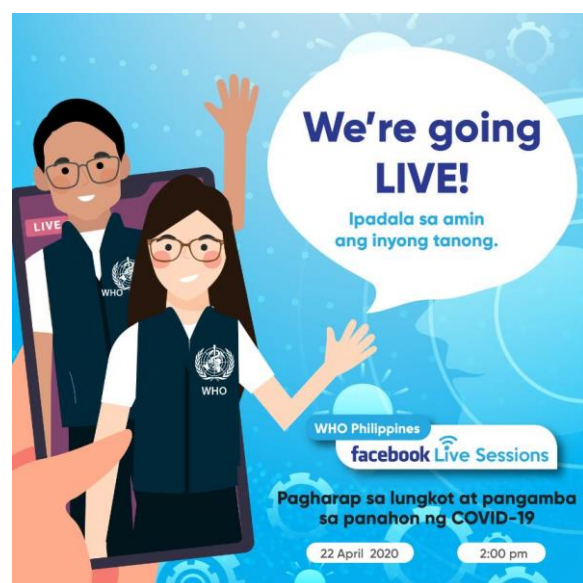
Country-level coordination

The Inter-Agency Task Force on Emerging Infectious Diseases (IATF-EID) is carefully considering the decision to extend the current enhanced community quarantine beyond 30 April next, taking into consideration the potential public health consequences and the socio economic impact on the overall country, as well as vulnerable groups whose livelihoods have been negatively affected by the ongoing restrictions.

All relevant government guidelines, issuances, and documents available online at bit.ly/COVIDPH.

Risk communication

WHO organised its first Facebook Live session to discuss the mental health impact of the COVID-19 situation https://www.facebook.com/watch/live/?v=612226662706423&ref=watch_permalink



Surveillance

Different clusters of confirmed COVID-19 cases reported in Cebu (Sitio Zapatera, Barangay Luz), Manila (Sampaloc), and Pasay (Barangay 201), are reportedly resulting in a lockdown of the affected areas districts to prevent further spread of infection.

Other reported clusters are being investigated at RITM (43 confirmed cases), the National Center for Mental Health (75 confirmed cases), the Quezon City Jail (over 40 confirmed cases), the Correctional Institution for Women in Mandaluyong (19 confirmed cases), the Cebu City Jail (312 confirmed cases) and the Bataan General Hospital and Medical Center (55 confirmed cases).

DOH and WHO are looking into the root causes of the increasing number of reported health workers infected with COVID-19, to identify effective ways to address these.

Recently issued guidelines are imposing all returning overseas Filipino workers including seafarers to spend 14 days in a quarantine facility upon arrival.

National laboratory system

In spite of RITM's scaled down operations, the overall daily tests conducted by the 17 certified laboratories is estimated at 3,200 tests. RITM is expected to be fully operational again by Saturday 25 April.

Laboratory assessments are ongoing between RITM, DOH, and WHO in Cagayan, Cebu, Negros, and Iloilo.

ADB delivered COVID-19 laboratory equipment worth 2.5 million USD from Shenzhen, China to DOH. Once the laboratory equipment is set up in 7-10 days, this will greatly enhance the daily testing capacity in the country.

A Memorandum of Understanding was signed between the Philippine Red Cross (PRC) and Metro Manila LGUs to increase PRC's daily testing capacity for COVID-19 to 8,000 by end April.

Infection prevention and control

Almost 2,000 hospital workers and community health workers all over the country have been reached with online trainings on Infection, Prevention and Control (IPC) conducted by the USAID-funded Medicines, Technologies, and Pharmaceutical Services (MTaPS) program and UNICEF.

Trainings are free and anyone interested can sign up:

- For community health workers (UNICEF): <https://forms.gle/WAVzGvMFC4geofdU9>
- For hospital workers (MTaPS): [online registration](#), or [landing page for the virtual training](#)

The Department of the Interior and Local Government (DILG) discouraged LGUs from using disinfection tents, misting chambers or sanitation booths on individuals following DOH and WHO's advisory stating that such measures are harmful for human health.

The United States Department of Defense (DOD) is supporting with the procurement of Personal Protection Equipment (PPE) worth 2 million USD for 7 Mindanao hospitals (Navarro General Hospital, Camp Teodulfo Bautista Station Hospital, Camp Siongco Station Hospital, Edwin Andrews Airbase Hospital, Kuta Major Cesar L Sang-an Station Hospital, Zamboanga City Task Force, and Zamboanga City Medical Centre).

The NGO Americares distributed 1,920 N95 masks and 4,000 surgical masks to different health partners in the Philippines, including DOH, V. Luna Medical Centre, Pasig Doctors Medical Centre, World Surgical Foundation Philippines, and the Order of Malta. Another 55,000 N95 masks in partnership with Project Hope will be distributed soon in NCR, Regions 4A, 7, 8, 5 and 2.

Americares is disseminating key messages on handwashing, social distancing, cough etiquette and home quarantine through social media, as well as through printed banners. Americares also supported partners in Cebu, Leyte, Laguna, Rizal and Antipolo City with technical guidance on proper wearing of PPE and preparedness of facilities for COVID-19 cases.

UNICEF distributed PPEs to 50 Rural Health Units and 20 hospitals in the Bangsamoro Autonomous Region in Muslim Mindanao (BARMM).

Case management and continuity of essential services

WHO is conducting free daily webinars on Clinical Perspectives on COVID-19 for non-ICU physicians, medical interns, clinical clerks, medical students. All sessions are made available online:

- 1) Oxygen Therapy was attended by 130 participants
https://www.youtube.com/watch?v=gaA6o2Btz_Y
- 2) Sepsis and Septic Shock was attended by 297 participants
<https://youtu.be/vSUcBBOVIaG>
- 3) Antimicrobial Therapy was attended by 360 participants
<https://www.youtube.com/watch?v=wXq3EXbObvU>

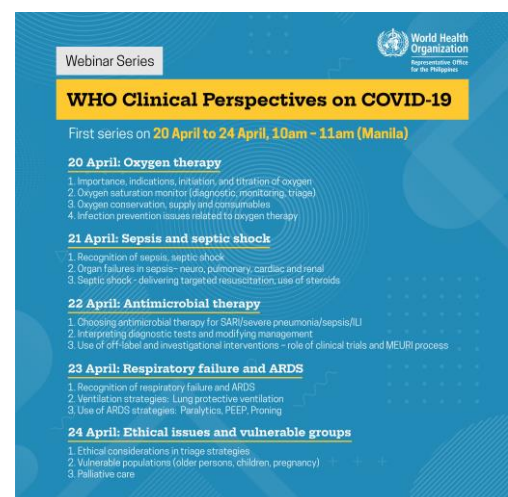
Those interested can register at <https://bit.ly/WHOPHLCOVID19>.

Americares is supporting with Psychological First Aid for frontliners in Cebu Province including those in partner health centers via phone calls done by trained project staff. Messaging on stress, coping and resilience are shared on Americares's Facebook including a video testimony of a nurse frontliner and a gratefulness tutorial to address anxiety.

The Ayala Group of Companies supported with 46.4 million PHP for the partial conversion of the World Trade Center (WTC) in Pasay City into a temporary COVID-19 healthcare facility, run by the Armed Forces of the Philippines Health Service Command <https://www.facebook.com/watch/?v=3009399692414185>

Similarly, the Eva Macapagal Super Terminal in Pier 15 was converted into a COVID-19 treatment facility in a joint effort between the Department of Transportation (DOTr), the Philippine Ports Authority (PPA), the Philippine Coast Guard (PCG), and the Maritime Industry Authority (MARINA), in cooperation with the private sector.

USAID and its MTaPS and Infectious Disease Detection and Surveillance (IDDS) programs, jointly with Plan International and WHO supported the Lanao del Sur Provincial Health Office with online trainings on IPC, setting up of COVID-19 treatment facilities, and specimen collection on 21 and 22 April.



Webinar Series

WHO Clinical Perspectives on COVID-19

First series on 20 April to 24 April, 10am - 11am (Manila)

20 April: Oxygen therapy

1. Importance, indications, initiation, and titration of oxygen
2. Oxygen saturation monitor (diagnostic, monitoring, target)
3. Oxygen conservation, supply and consumables
4. Infection prevention issues related to oxygen therapy

21 April: Sepsis and septic shock

1. Recognition of sepsis, septic shock
2. Organ failures in sepsis- neuro, pulmonary, cardiac and renal
3. Septic shock- delivering targeted resuscitation, use of steroids

22 April: Antimicrobial therapy

1. Choosing antimicrobial therapy for SARS/severe pneumonia/sepsis/ILI
2. Interpreting diagnostic tests and modifying management
3. Use of off-label and investigational interventions - role of clinical trials and MELRI process

23 April: Respiratory failure and ARDS

1. Recognition of respiratory failure and ARDS
2. Ventilation strategies: Lung protective ventilation
3. Use of ARDS strategies: Paralytic, PEEP, Proning

24 April: Ethical issues and vulnerable groups

1. Ethical considerations in triage strategies
2. Vulnerable populations (older persons, children, pregnancy)
3. Palliative care

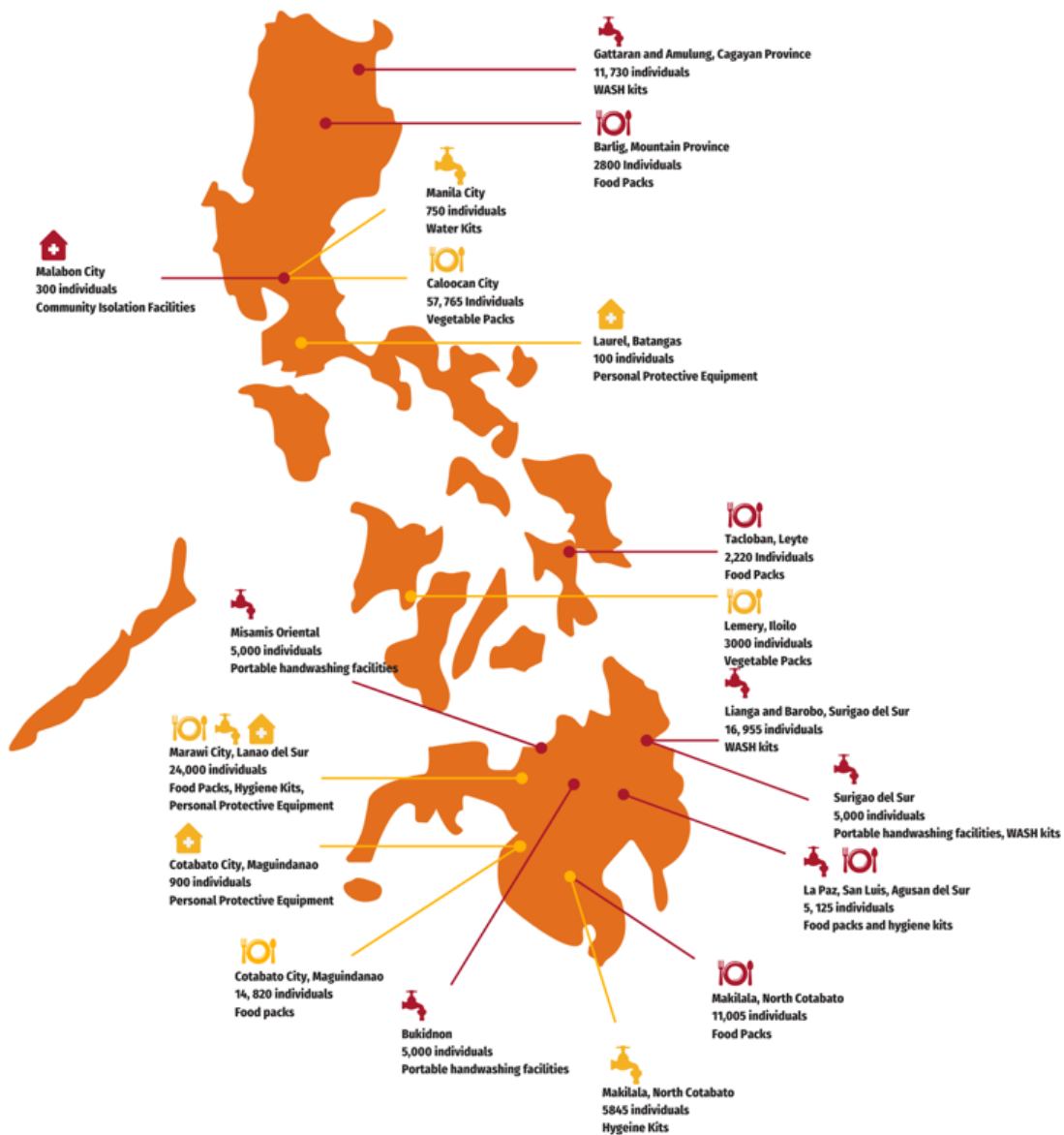


CARE Philippines COVID-19 Response in numbers

as of April 19, 2020



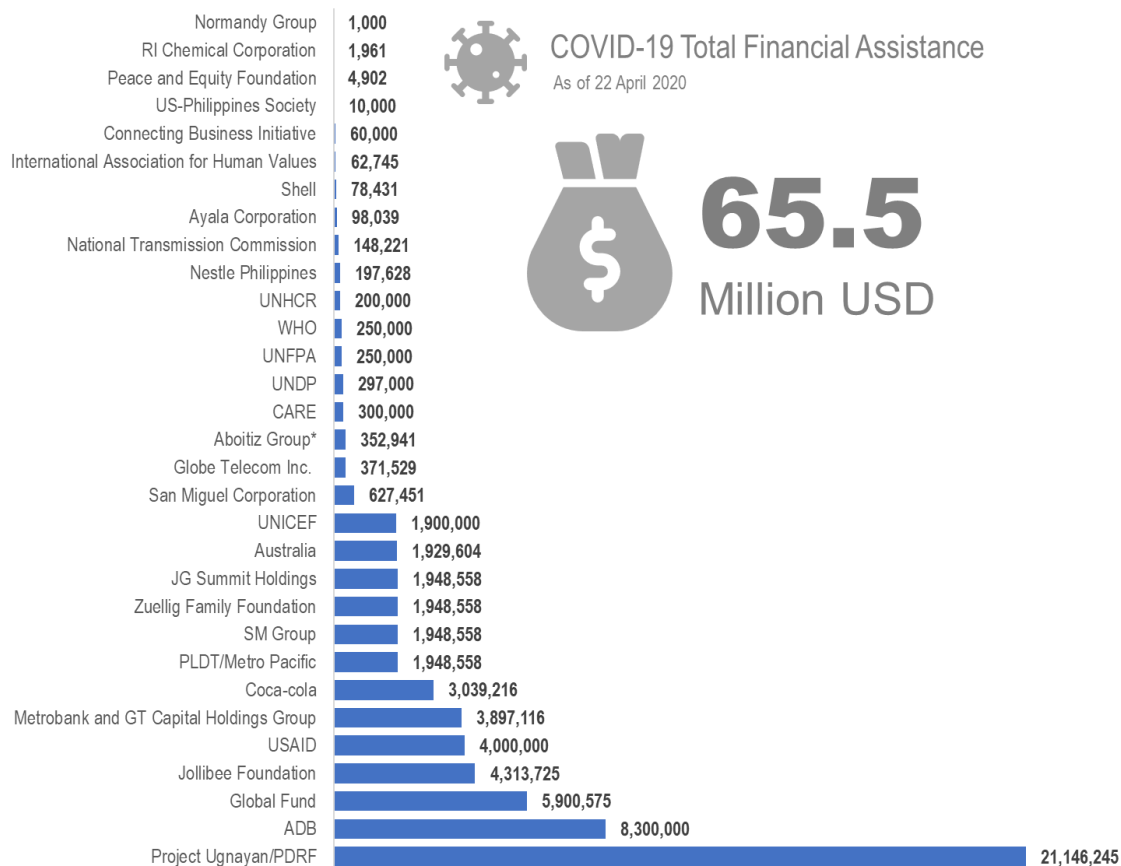
-  **Health**
 -  **WASH**
 -  **Food Security**
 -  **Risk Communication reach country wide**
-
- **Accomplished**
 - **Ongoing**
-
- 313,548 Social Media
 - 1,162 Text Messages
 - 38,005 IEC Materials



Resource mobilization

Grant

Overall donations received to date (data compiled by OCHA):



Please see for details of all items distributed so far by DOH: <https://bit.ly/DOHCommDistribution>.

As of 21 April, WHO received more than US\$ 377.1 million and an additional US\$ 240.6 million in pledges to its global appeal. This includes €114 million from the European Union to support 80 priority countries with weakened health care systems and capacity including the Philippines.

Loan



100M

World Bank

Logistics, procurement, and supply management

Who	What	Delivered	Expected	
Americares	N95 masks	1,920		
	Surgical masks	4,000		
Chinese government	COVID-19 test kits	100,000		
	PPE sets	10,000		
	N95 masks	10,000		
	Surgical masks	100,000		
IAHV	Masks	23,210		
IMC	PPE	200		
	Surgical gowns	4,765		
	Examination gloves	33,869		
	Surgical masks	206,000		
	Goggles	30		
	Cot beds	10		
	Electric fans	20		
Japan government	PPE	12,000		
PRC	Medical tents for isolation and treatment	30		
	Face masks	36,000		
	PPE	2,000		
	Medical supplies, masks, alcohol, food	6 Manila hospitals		
UNFPA	Face masks	110,000		
	Handheld thermometers	1,130		
	PPE	254,839	131,516	
	Medical Triage Tents and equipment sets	4	2	
	Hygiene kits for women	750	350	
	Clean delivery packs		500	
	Women Friendly Space Tents	1	2	
	Women and Child Protection Unit equipment	1		
UNICEF	Tents for triage and isolation purposes	20	24	
	Coverall, protection, CatIII, type 4b		72,380	
	Faceshield, fog-resistant, fullface, disp		33,000	
	Mask, high-fil, FFP2/N95, no valve, nonster		48,000	
	Mask, surgic, typellR, ear loop, disp.		409,200	
	Gloves, w/opowder, nitr		100,000	
	Gloves, heavy-duty, rubber/nitrile		1,000	
	Goggles, protective, indirect-side-venti		500	
	Apron, protection, plastic, reusable		500	
	Boots, rubber/PVC, reusable, pair		500	
	Sprayer, compression type, 7.4 litres		160	
Sanitation and cleaning kit		500		
US government	Cots	1,300		
WFP	Tent	2		
	50 kVA generator	2		
WHO (with USAID funding)	Laboratory supplies	<i>E-gene EAV kits</i>	115	
		<i>RdRP-gene kits</i>	95	
		<i>N gene/E gene/RdRp gene vials</i>	12	
		<i>Universal Transport Media viral kit</i>	2,350	
		<i>Regular Flocked Swab</i>	2,000	
		<i>Flexible Mini Tip</i>		2,000
	Extraction kits	<i>QIAGEN QIamp RNA Kit</i>	16	21
		<i>SuperScript III Platinum One-step qRT-PCR</i>	3	2
World Vision	Mobile Storage Unit 10 x 32m	4		
	Tents (child-friendly space) 7 x 6m	17		
	PPE (4 goggles, 4 aprons, 4 N95 masks, 200 surgical caps, 100 gloves, 200 shoe covers)	458		
	Disinfectant kits	30		